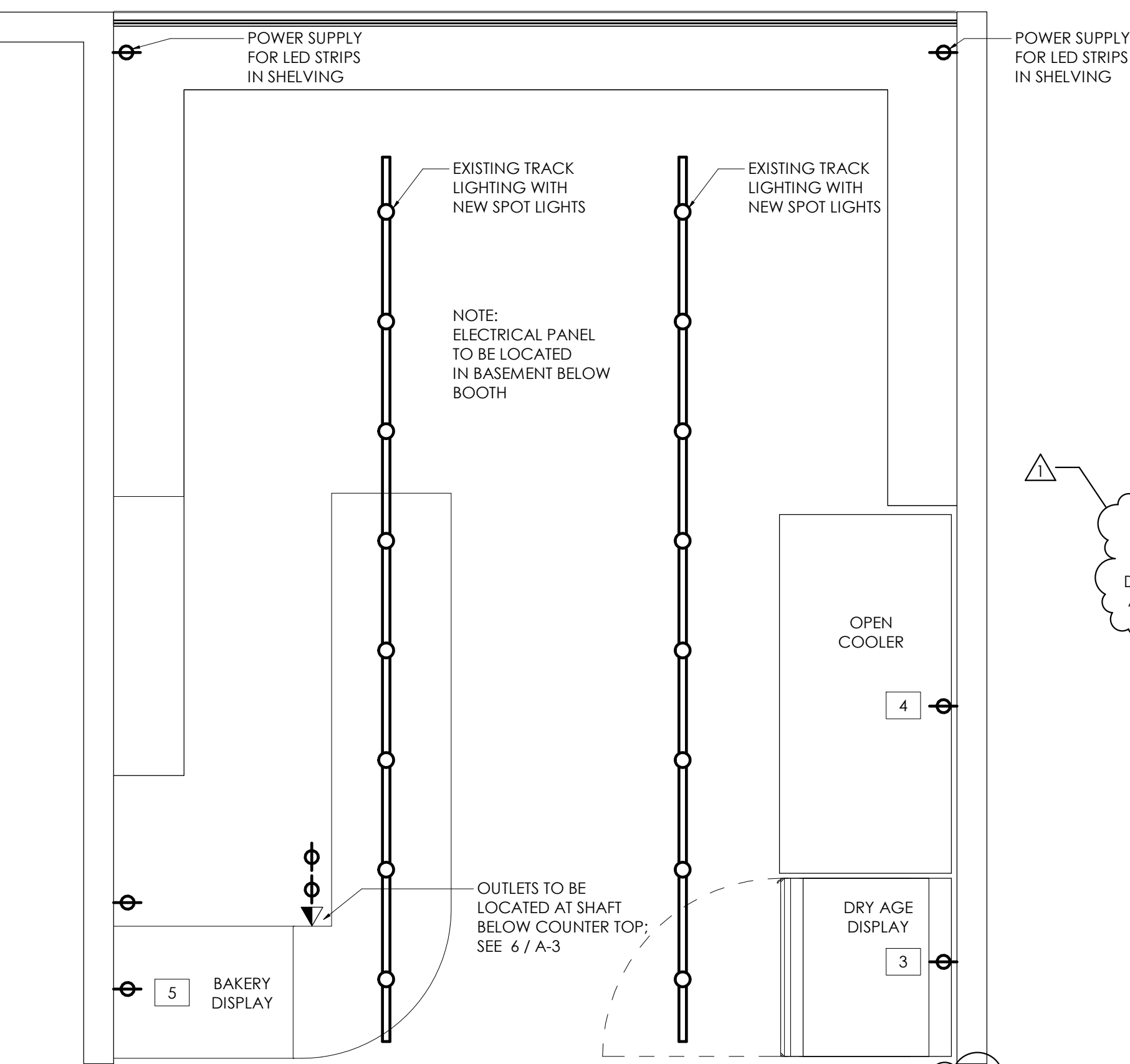


1 FLOOR PLAN
SCALE: 1/2" = 1'-0"



2 REFLECTED CEILING + POWER PLAN
SCALE: 1/2" = 1'-0"

PLAN LEGEND:

- EXISTING PARTITION
- NEW PARTITION
- PROVIDE POWER TO EQUIP.
- PROVIDE DATA TO EQUIP.
- EQUIPMENT TAG
- MATERIAL TAG

EQUIPMENT SCHEDULE

TAG	QTY.	DESCRIPTION	MANUFACT.	ELECTRIC	PLUMBING	REMARKS
1	1	3 COMPARTMENT SINK	REGENCY		COLD / HOT / DRAIN	
2	1	HAND WASHING SINK	REGENCY		COLD / HOT / DRAIN	
3	1	DRY AGE REFRIGERATOR	GTI DESIGNS	220V / 1PHASE / 60HZ / 5 AMPS		
4	1	REACH-IN DISPLAY REFRIGERATOR	FEDERAL INDUSTRIES	1 HP / 15 AMPS		
5	1	BAKERY DISPLAY CASE	AVANTCO	115V / 3.7 AMPS / 60Hz 1PHASE		
7	1	FOOD SCALE	AVA WEIGH	BATTERY OR 12Vdc > 500mA		
8	1	JAMON DISPLAY				
9	1	RFID COMBINATION READER	ZEBRA	18W (37.55 VDC POE)		
10	1	POS KEY PAD, CONTACTLESS CHIP	SQUARE, INC.			
11	1	18" BLACK MAGNETIC KNIFE HOLDER	DEXTER-RUSSELL			

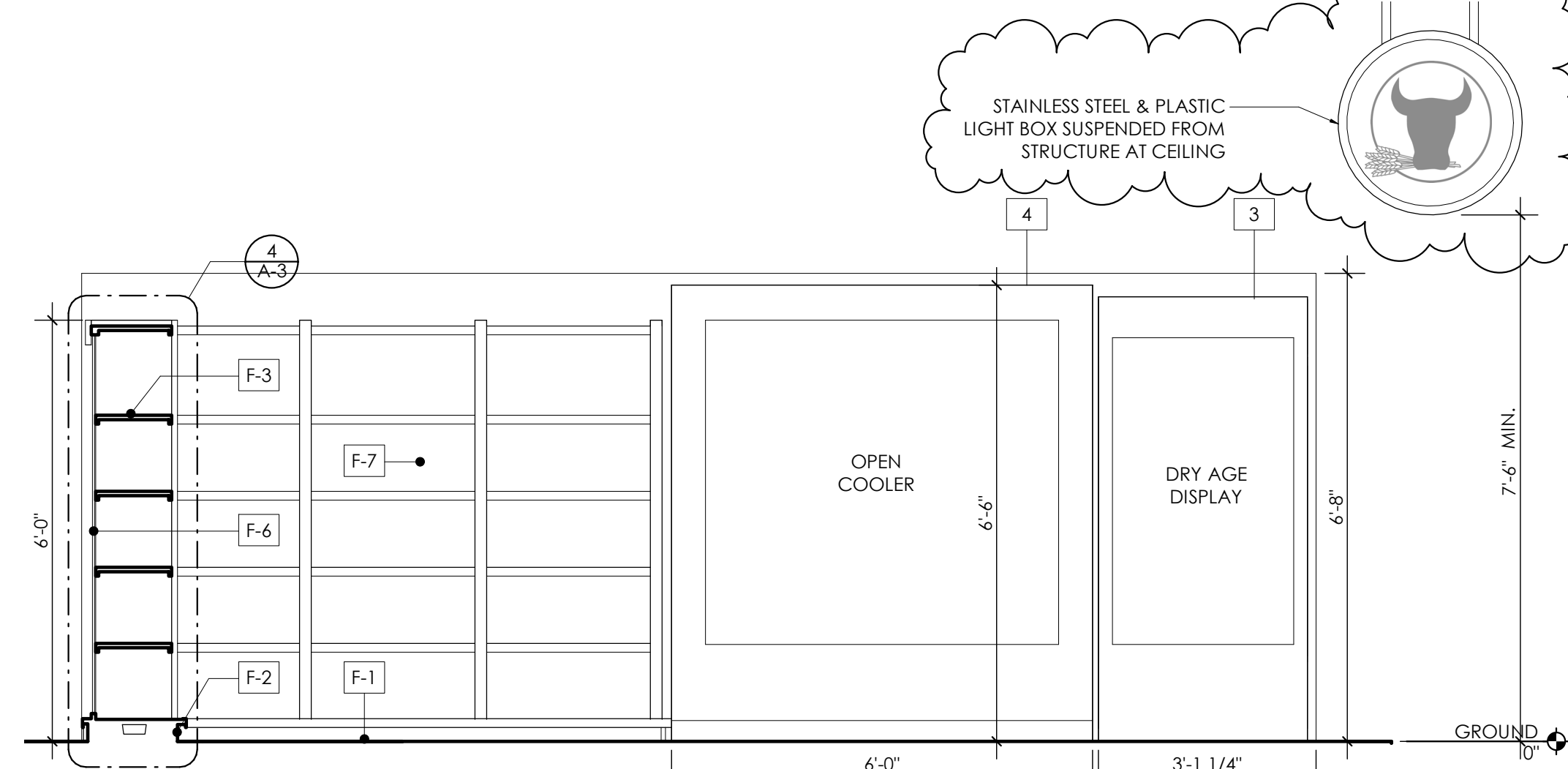
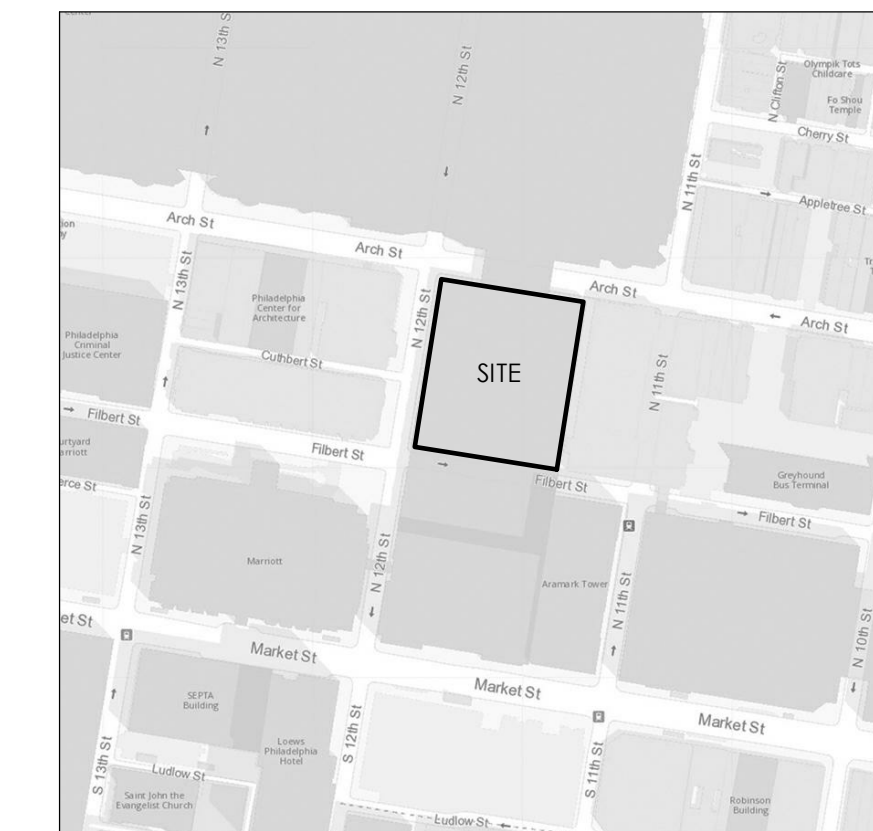
MATERIAL FINISH SCHEDULE

TAG	DESCRIPTION	MATERIAL / FINISH	MANUFACT.
F-1	FLOOR	CERAMIC TILE; EPOXY GROUT	
F-2	SHELF BASE	POURED CONCRETE; EPOXY COATING	
F-3	DISPLAY SHELVING	WOOD; MATTE POLYURETHANE	
F-4	COUNTER TOP	WOOD, OAK; MATTE POLYURETHANE	
F-5	PREP AREA SHELVING	LAMINATE ON SOLID PLYWOOD	
F-6	SNEEZE GUARD	GLASS	
F-7	WALL	GYPSUM BOARD	
F-8	WALL	CERAMIC TILE	
F-9	GLASS PARTITION	STEEL FRAME; GLASS PANEL	
F-10	LIGHTS	EXISTING LED WITH LENSE COVER	

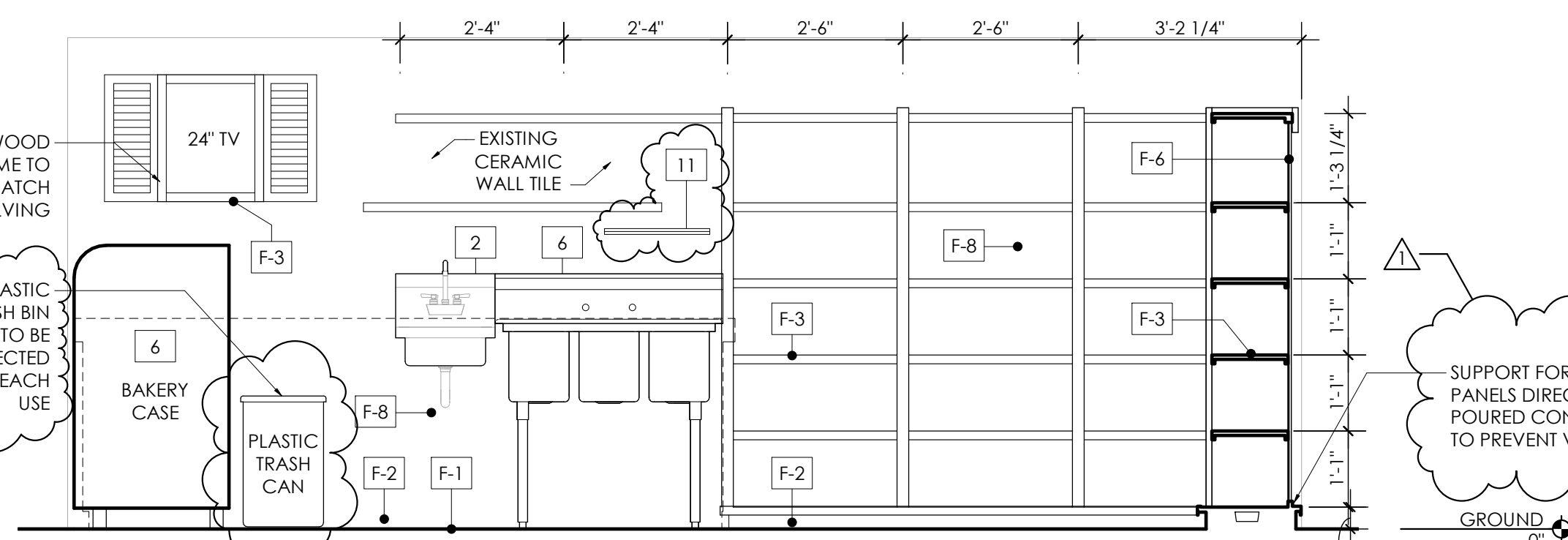
GENERAL NOTES:

- DESIGNATED AREAS FOR BOTH DRY AND COLD STORAGE EXIST IN BASEMENT IN PREVIOUSLY APPROVED DRY STORAGE ROOMS & WALK-IN COOLERS. SEE BASEMENT PLAN DIAGRAM BELOW FOR LOCATION
- BASES OF ALL SHELVES ARE TO BE FILLED WITH CONCRETE TO PREVENT VERMIN INFESTATION
- UTENSILS WILL CONSIST OF KNIVES AND OTHER MEAT CUTTING EQUIPMENT; ALL UTENSILS WILL BE CLEANED IN SINK AND DRIED / STORED ON MAGNETIC STRIP. SEE EQUIPMENT SCHEDULE (ITEM #11). SEE 4/A-1
- EMPLOYEE PERSONAL ITEMS ARE TO BE STORED ON SOUTH BOTTOM SHELF BEHIND SERVICE COUNTER; SEE 3, 7/A-2
- ALL CLEANING PRODUCTS WILL BE STORED ON NORTH BOTTOM SHELF BEHIND SERVICE COUNTER; SEE DRAWINGS 3, 7/A-2
- ALL OTHER NON-FOOD ITEMS WILL BE STORED ON BOTTOM SHELF BEHIND COUNTER
- TRASH ITEMS ARE TO BE STORED IN PLASTIC BIN PROVIDED; TRASH IS TO BE REMOVED WHEN FULL OR AT END OF EACH DAY. REMOVED TRASH IS TO BE PLACED IN DESIGNATED READING TERMINAL MARKET TRASH AREA
- FLOOR DRAINS ARE LOCATED OUTSIDE OF THE BOOTH
- THERE WILL BE NO COOKING, FRYING OR DISPOSING OF GREASE IN THIS BOOTH; THEREFORE NO GREASE TRAP IS PROVIDED

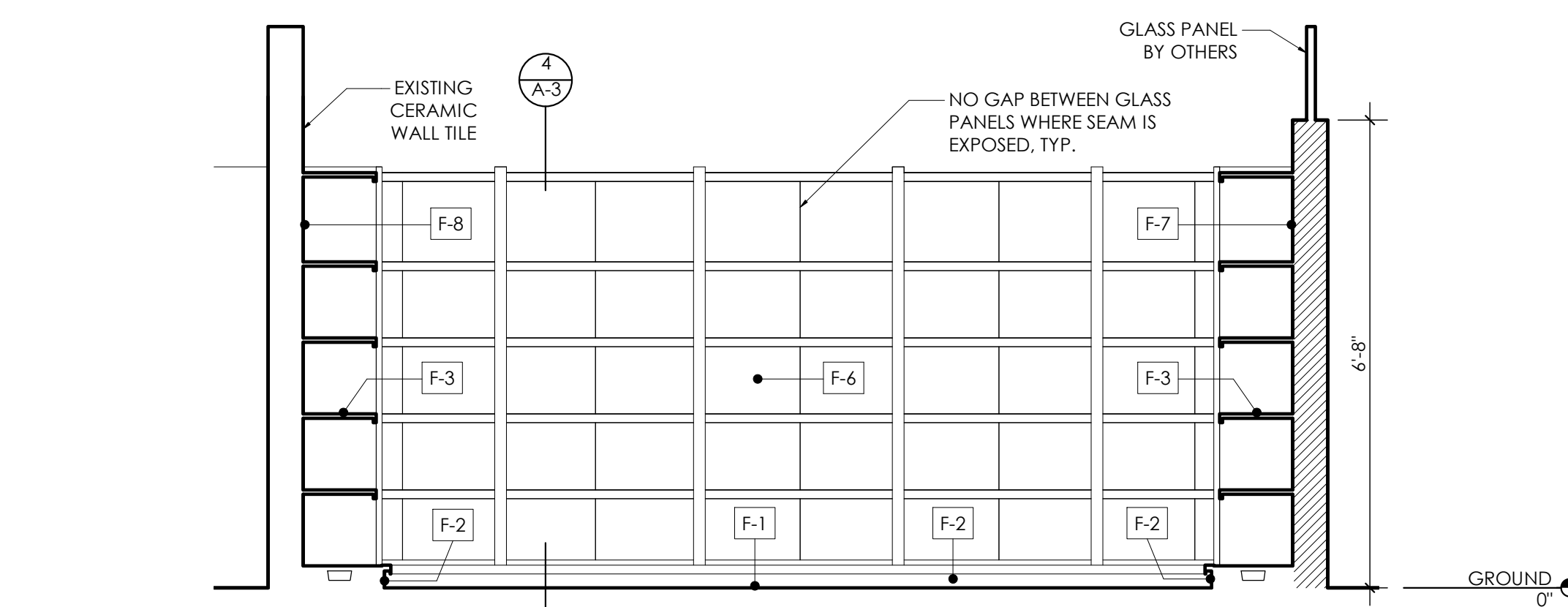
LOCATION MAP



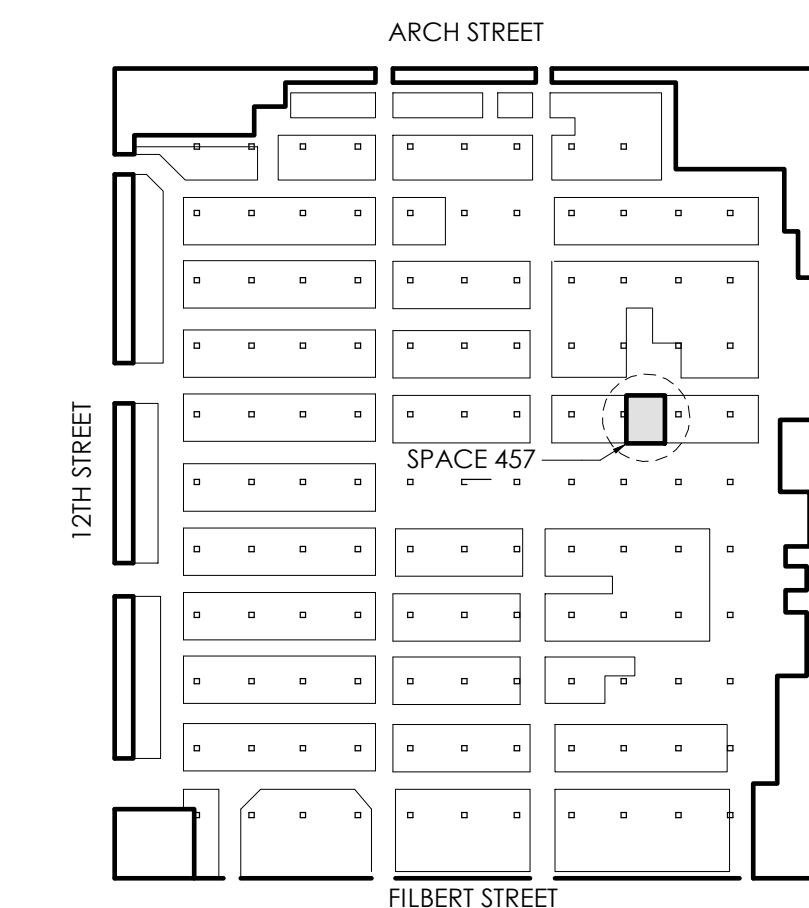
3 EAST ELEVATION
SCALE: 1/2" = 1'-0"



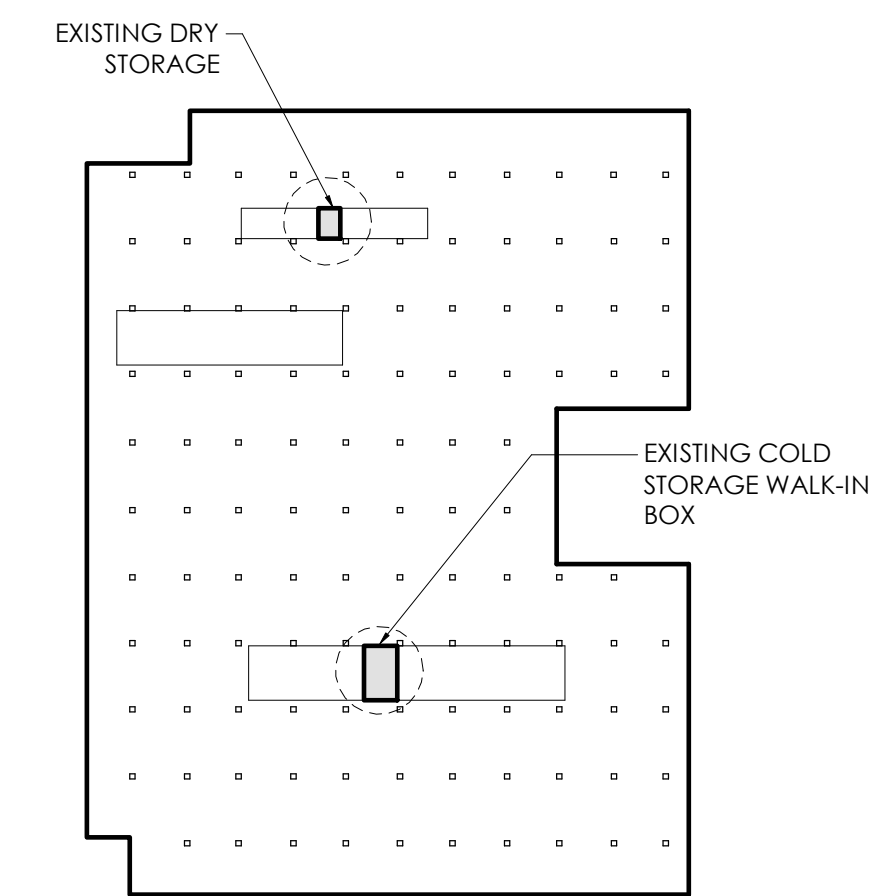
4 WEST ELEVATION
SCALE: 1/2" = 1'-0"



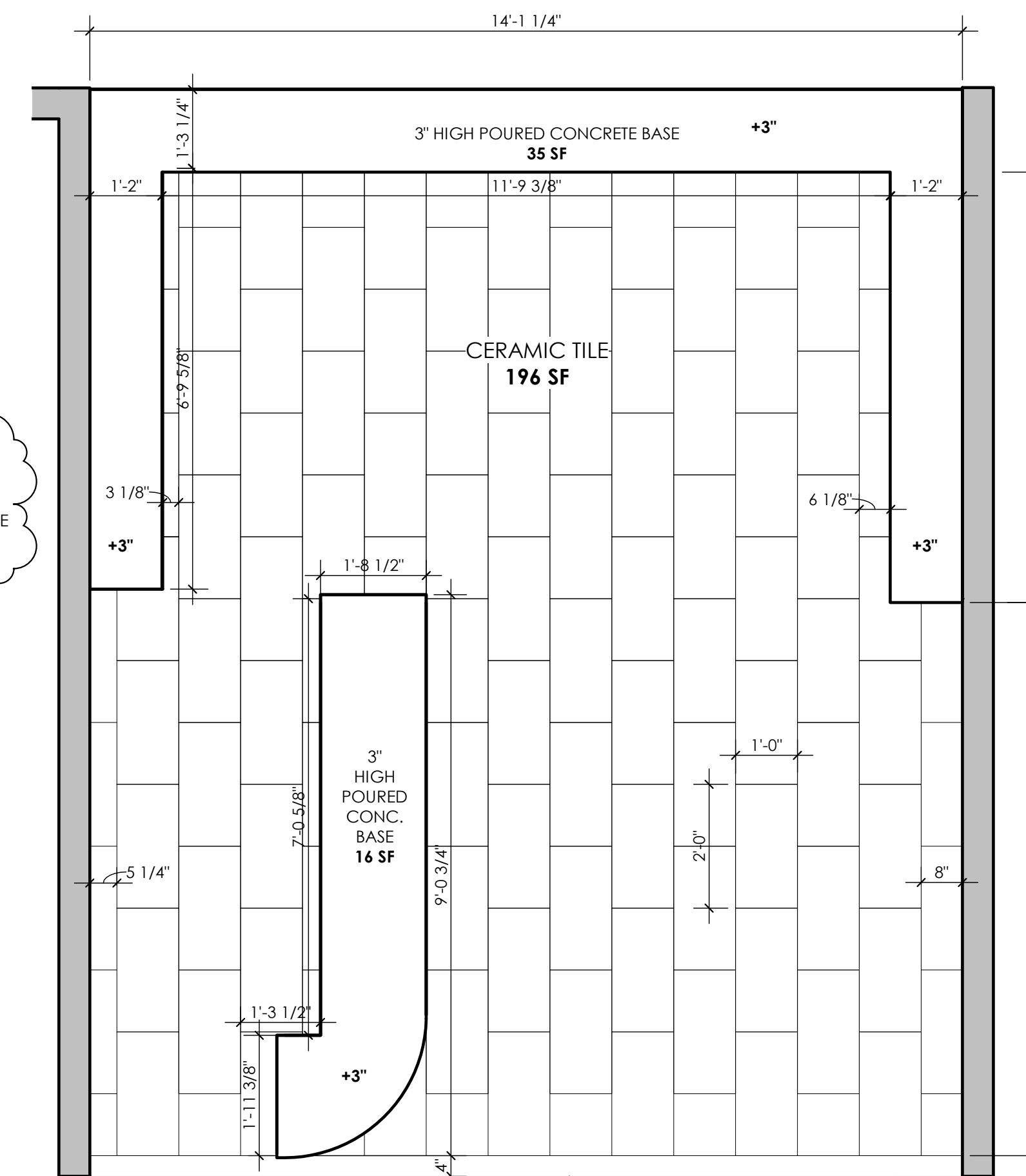
5 NORTH ELEVATION
SCALE: 1/2" = 1'-0"



GROUND FLOOR PLAN DIAGRAM



BASEMENT PLAN DIAGRAM



6 FINISH FLOOR PLAN
SCALE: 1/2" = 1'-0"

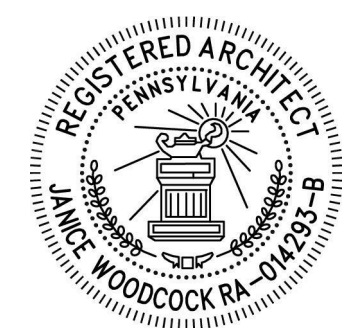


ARCHITECT
WOODCOCK DESIGN, INC.
1518 Walnut Street
Suite 303
Philadelphia, PA 19102
T: 267.738.0956
jwoodcock@woodcock-design.com

MILLWORK CARPENTER
A.K. CUSTOM INTERIORS
1745 TILGHMAN STREET
PHILADELPHIA, PA 19122
T: 215.839.6659
KEVIN@AKCUSTOMCABINETS.COM

TASTE OF SPAIN

READING TERMINAL MARKET
1126 ARCH STREET, SPACE 457
PHILADELPHIA, PA 19107



JANICE WOODCOCK, AIA
RA-014293-B
Philadelphia BPL: 154698
AC # 2349523

DATE:	10/23/2019
REVISION	DATE
PERMIT	10/02/2019
	10/23/2019

DRAWING TITLE:
FLOOR PLANS, ELEVATIONS & DETAILS

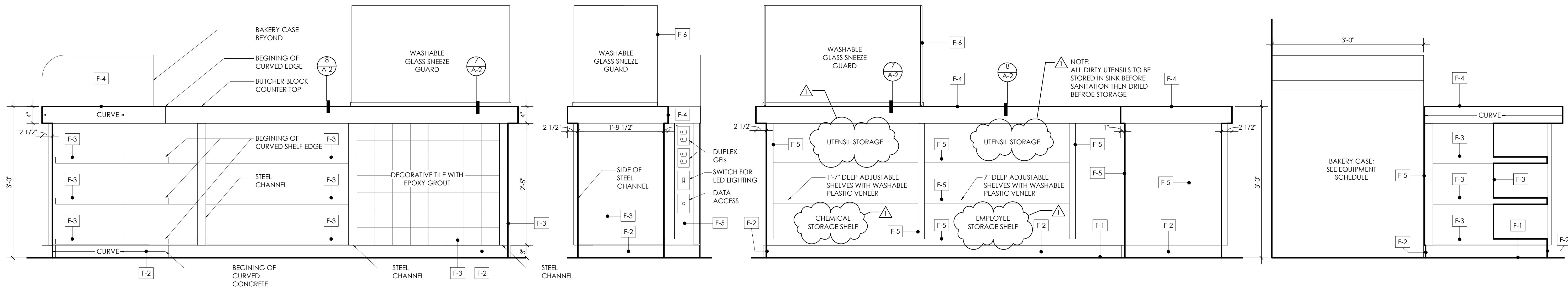
DRAWING NO:

A-1



ARCHITECT
WOODCOCK DESIGN, INC.
1518 Walnut Street
Suite 303
Philadelphia, PA 19102
T: 267.738.0956
jwoodcock@woodcock-design.com

MILLWORK CARPENTER
A.K. CUSTOM INTERIORS
1745 TILGHMAN STREET
PHILADELPHIA, PA 19122
T: 215.839.6659
KEVIN@AKCUSTOMCABINETS.COM

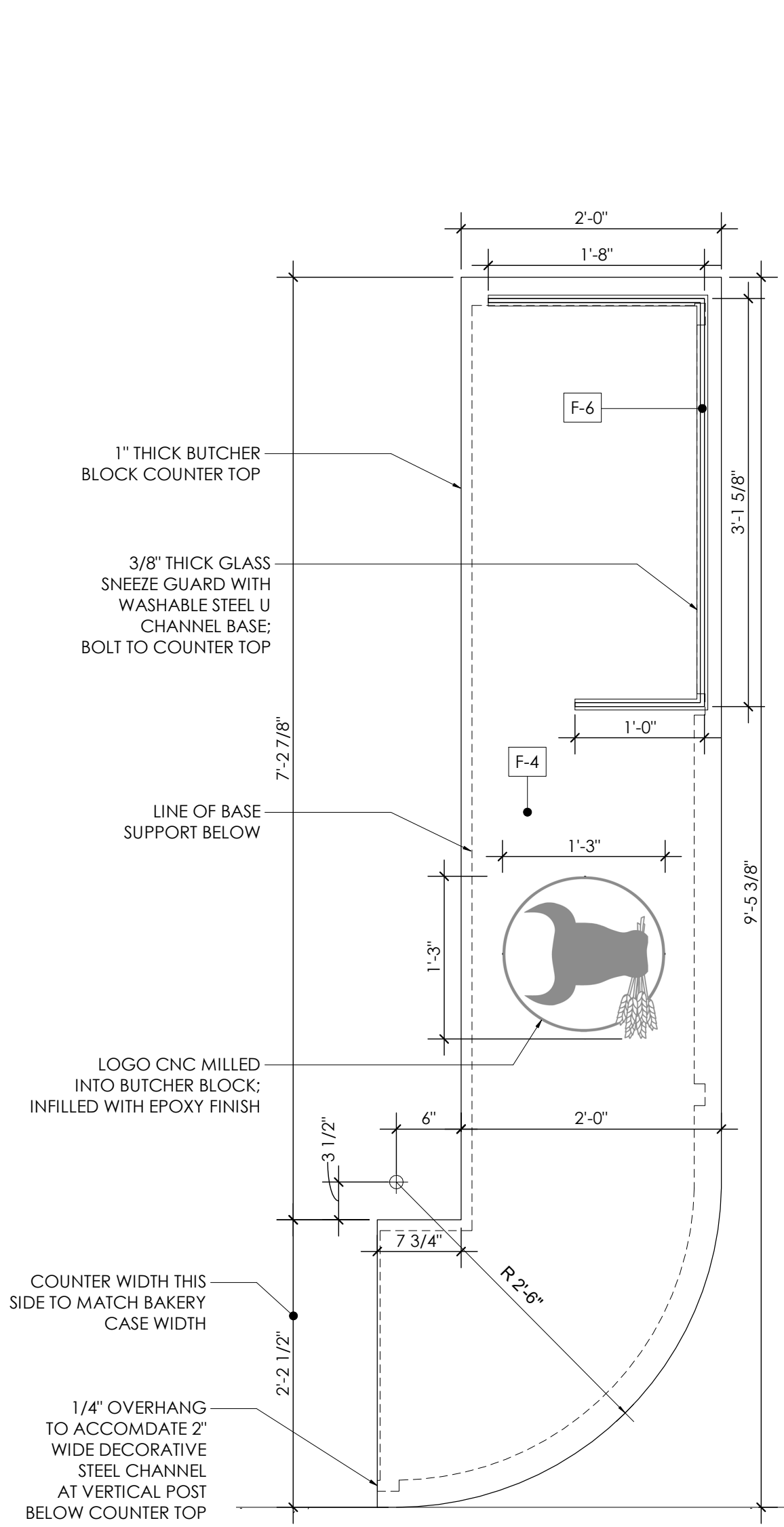


1 CASEWORK ELEVATION - CUSTOMER SIDE
SCALE: 1" = 1'-0"

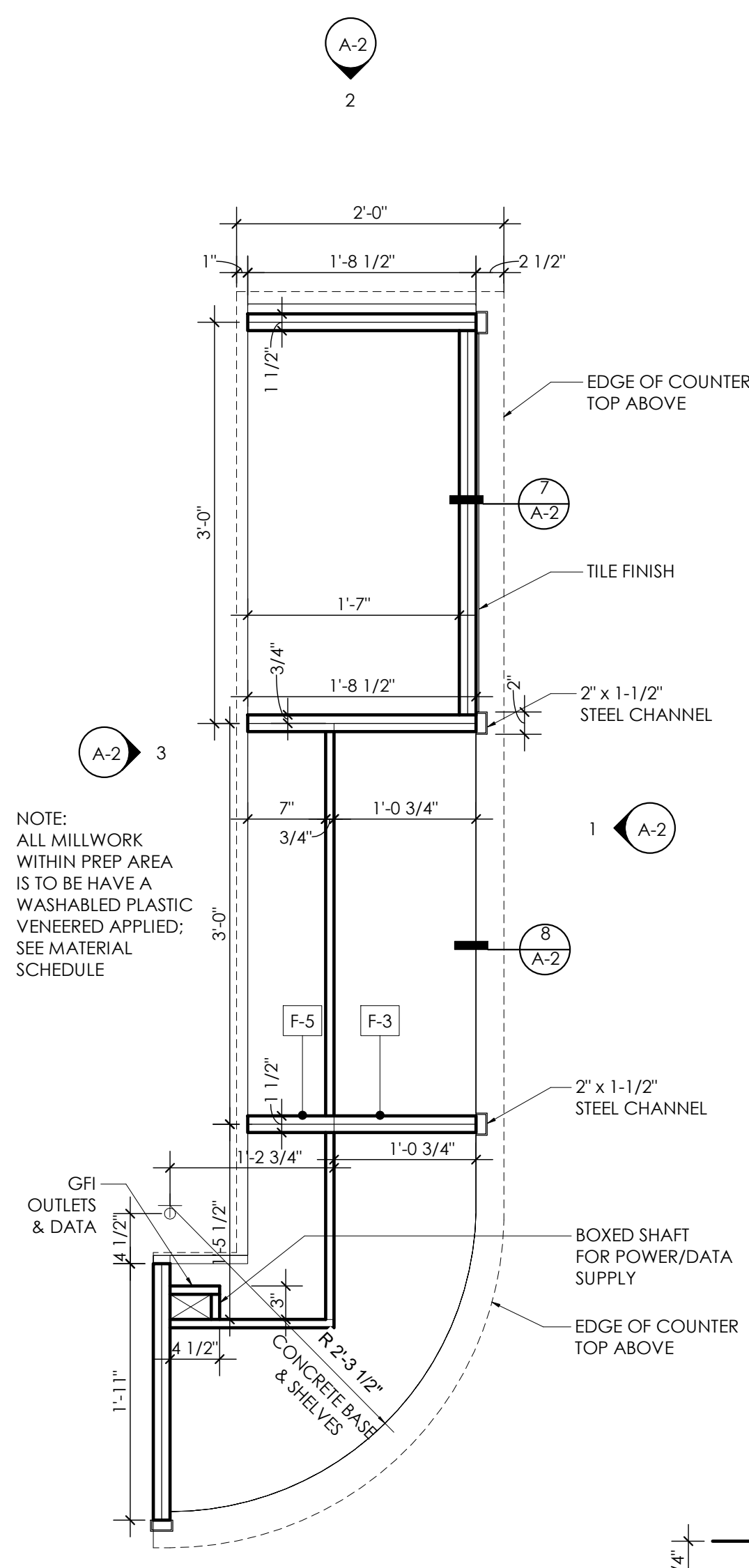
2 CASEWORK ELEVATION - END
SCALE: 1" = 1'-0"

3 CASEWORK ELEVATION - SERVICE SIDE
SCALE: 1" = 1'-0"

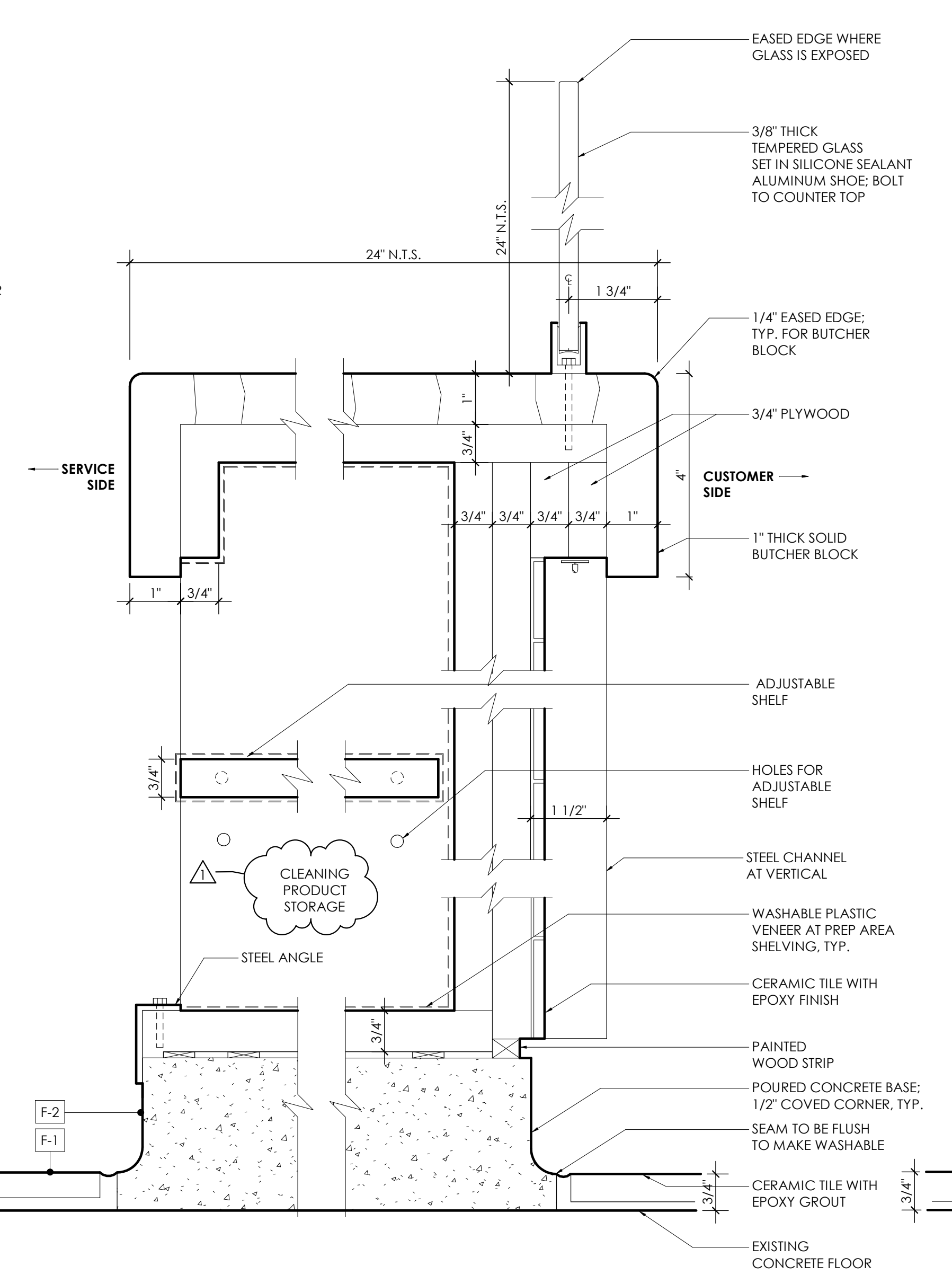
4 CASEWORK ELEVATION - CUSTOMER SIDE FRONT
SCALE: 1" = 1'-0"



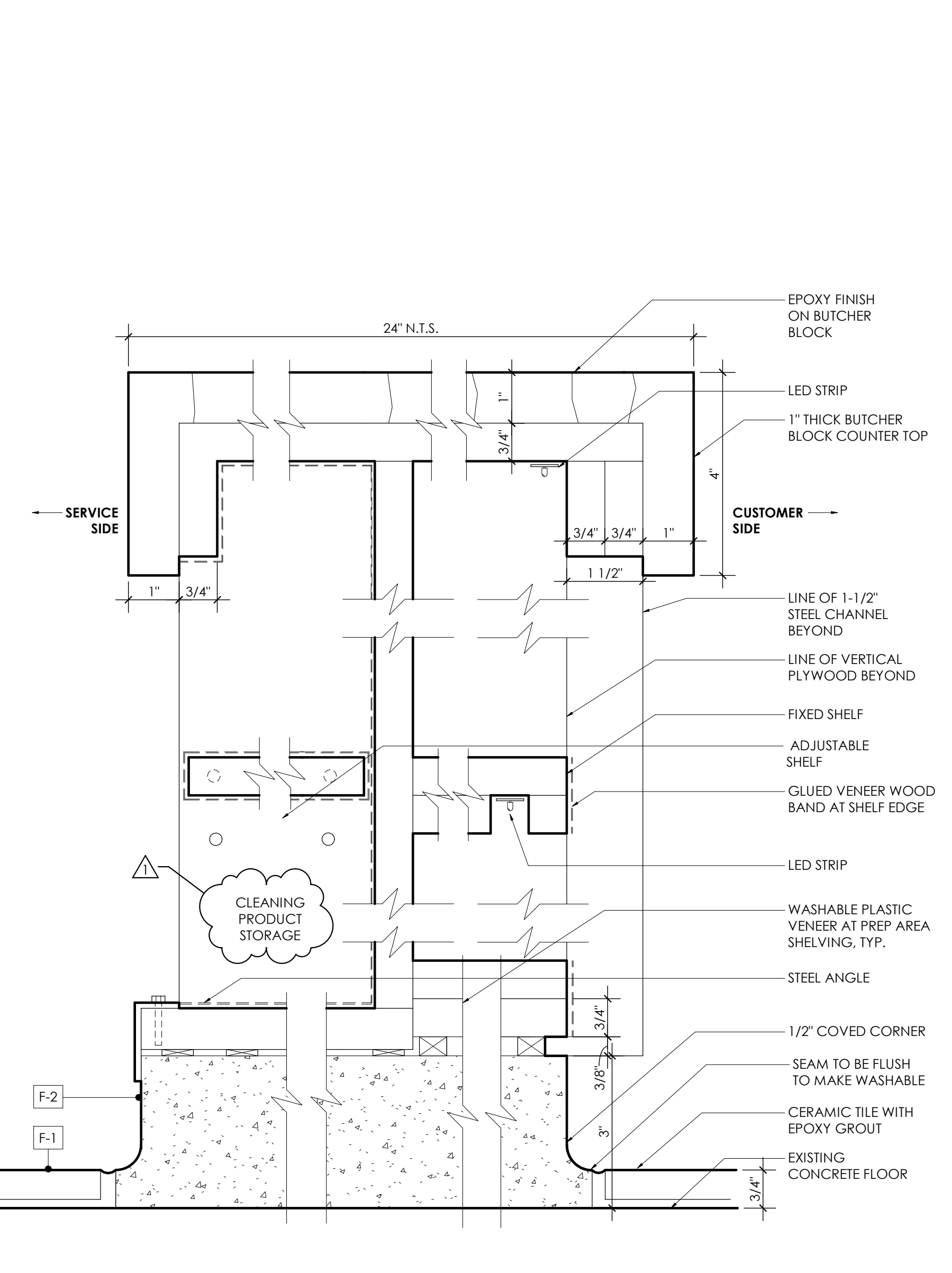
5 PLAN AT PREP AREA - COUNTER TOP
SCALE: 1" = 1'-0"



6 PLAN AT PREP AREA - BASE CABINET
SCALE: 1" = 1'-0"



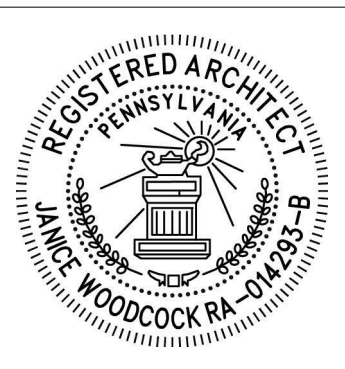
7 SECTION DETAIL AT COUNTER
SCALE: 6" = 1'-0"



8 SECTION DETAIL AT COUNTER 2
SCALE: 6" = 1'-0"

TASTE OF SPAIN

READING TERMINAL MARKET
1126 ARCH STREET,
SPACE 457
PHILADELPHIA, PA
19107



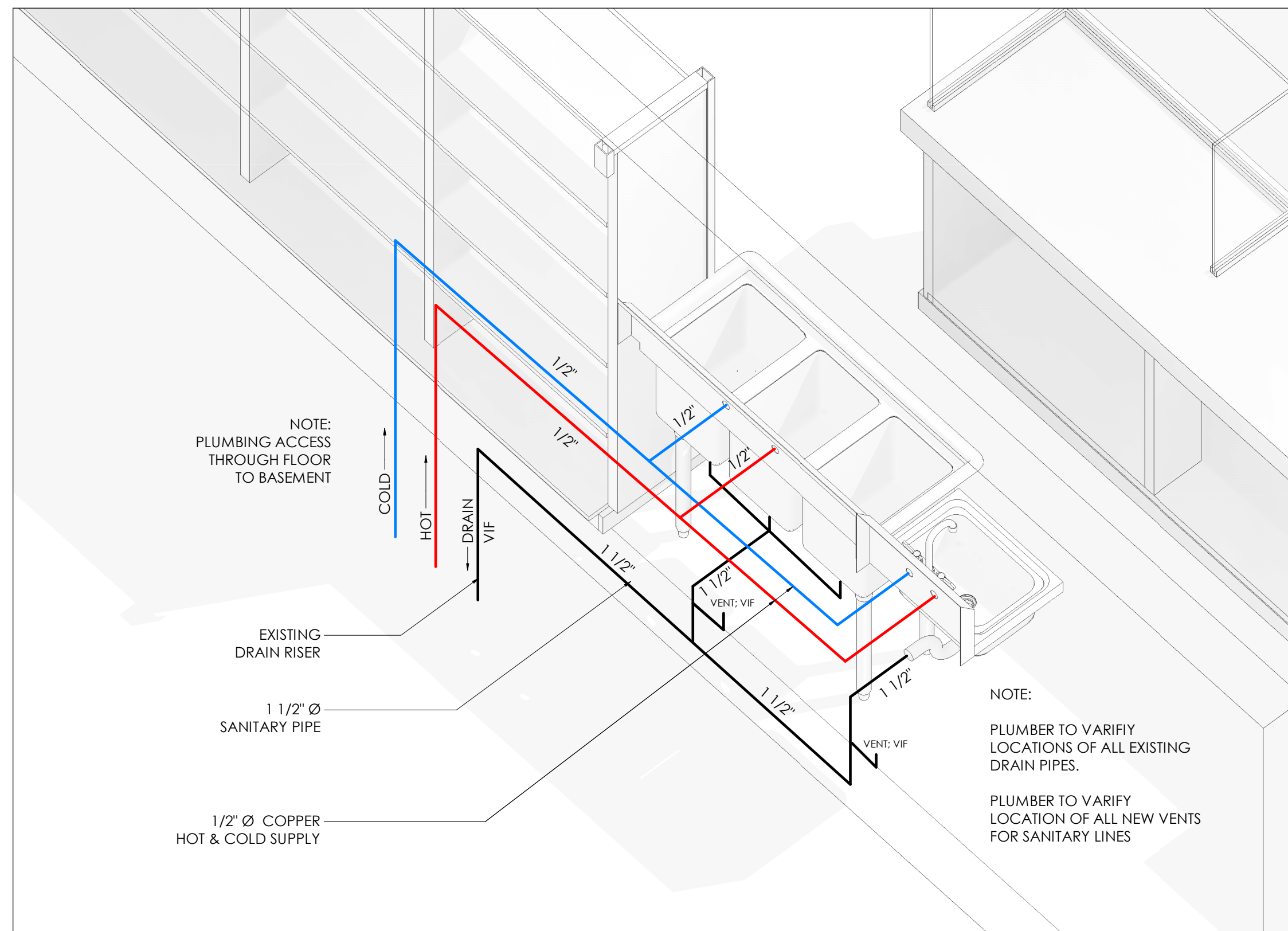
JANICE WOODCOCK, AIA
RA-014293-B
Philadelphia BPL: 154698
AC # 2349523

DATE:	10/23/2019
REVISION	DATE
PERMIT	10/02/2019
	10/23/2019

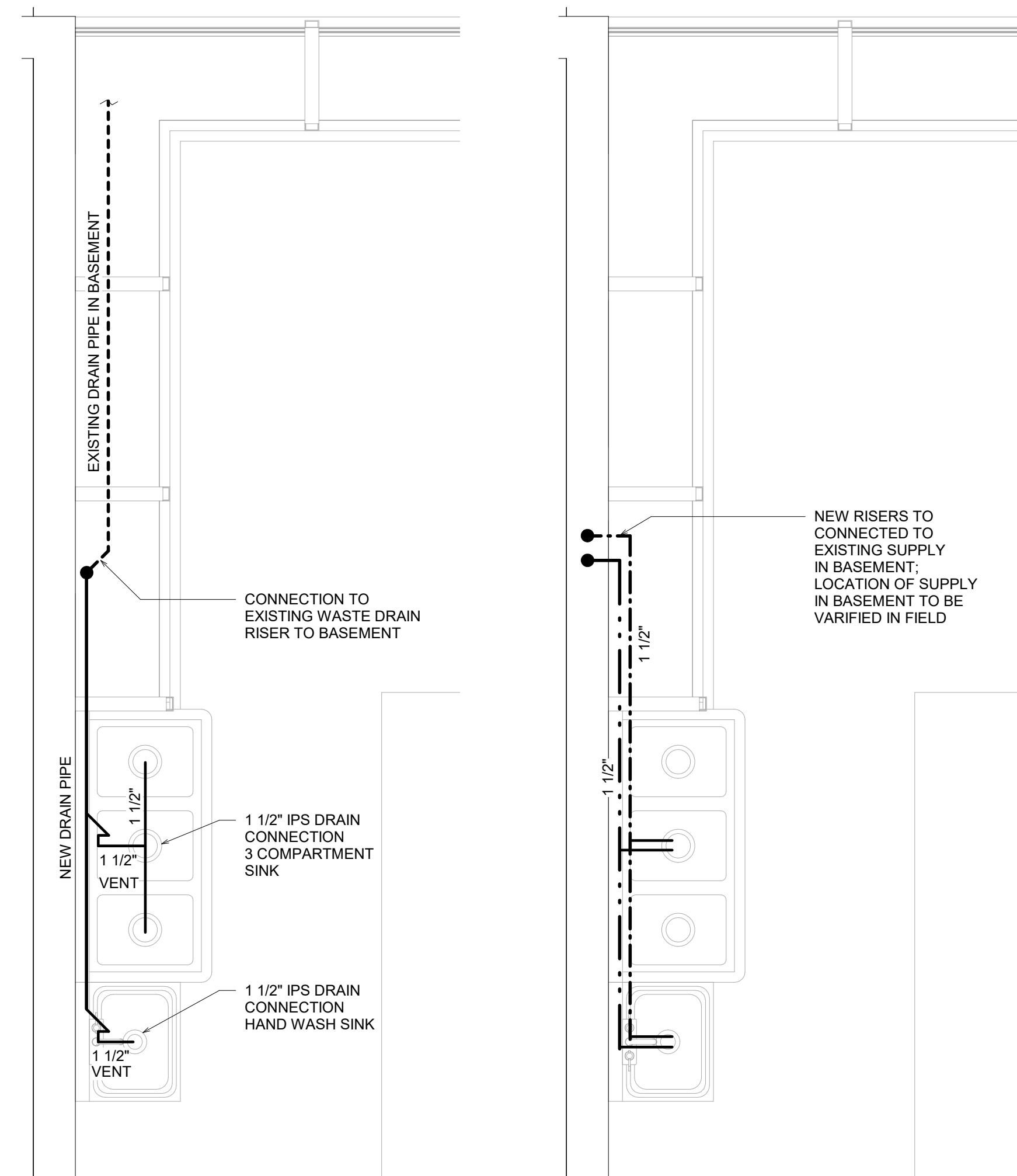
DRAWING TITLE:
ELEVATIONS & DETAILS

DRAWING NO:

A-2

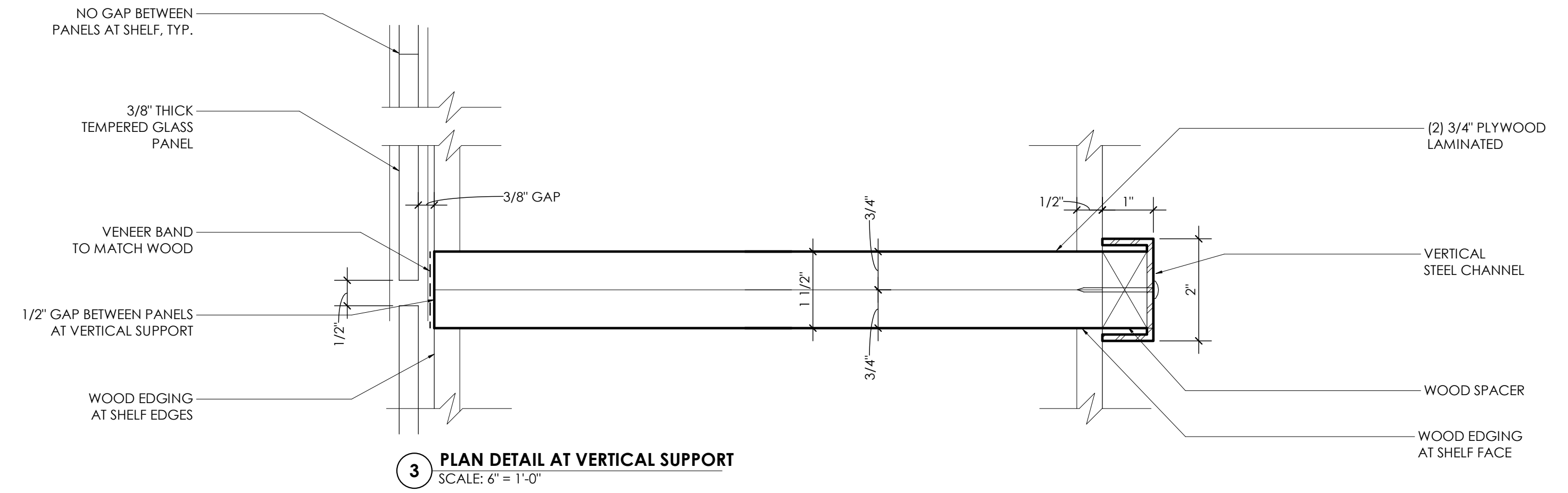


1 ISOMETRIC RISER DIAGRAM
SCALE:

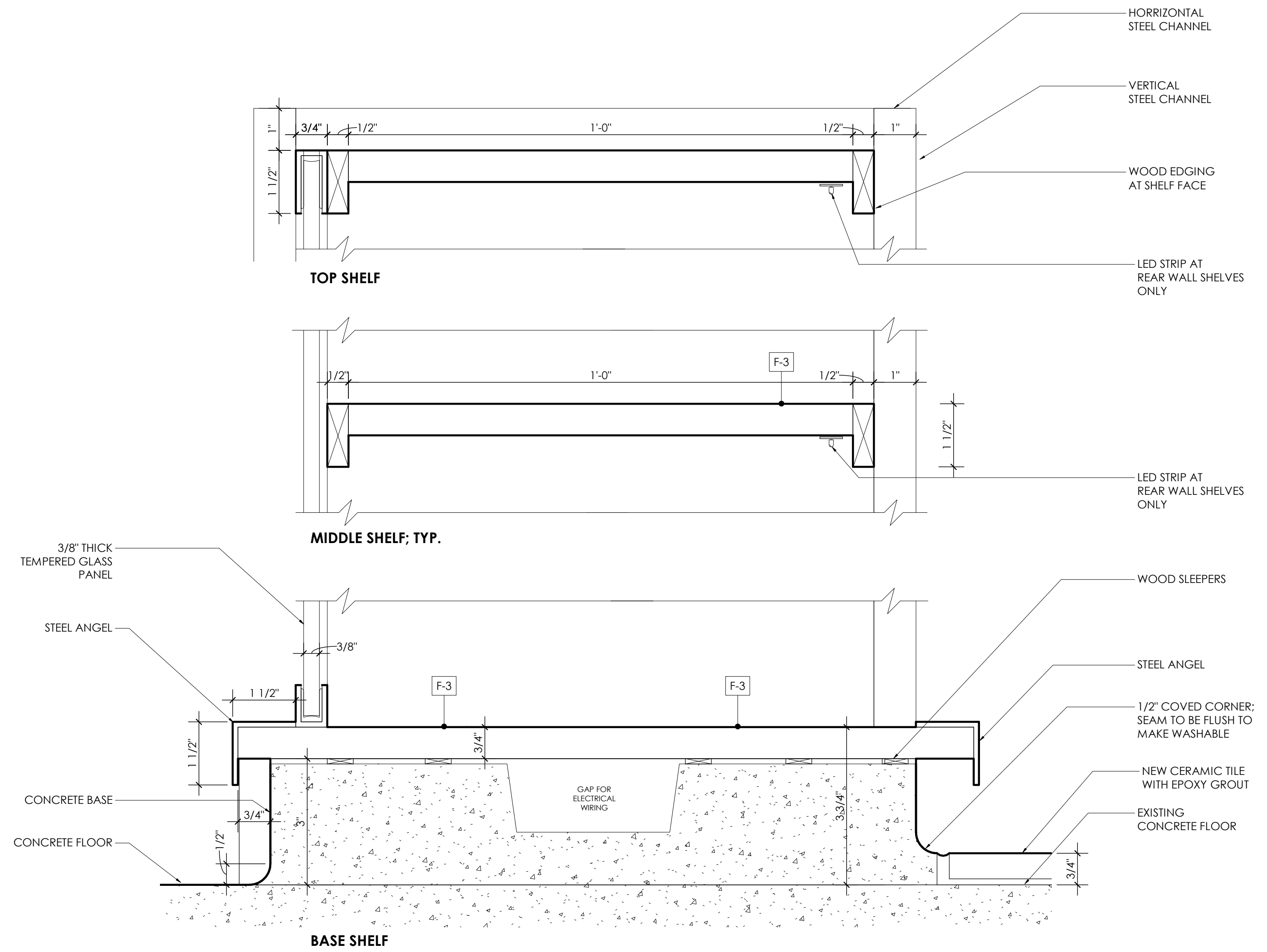


5 RISER DIAGRAM - DRAINAGE PLAN
SCALE: 3/4" = 1'-0"

6 RISER DIAGRAM - SUPPLY PLAN
SCALE: 3/4" = 1'-0"



3 PLAN DETAIL AT VERTICAL SUPPORT
SCALE: 6" = 1'-0"



4 SECTION DETAIL AT REAR SHELVING
SCALE: 6" = 1'-0"



ARCHITECT
WOODCOCK DESIGN, INC.
1518 Walnut Street
Suite 303
Philadelphia, PA 19102
T: 267.738.0956
jwoodcock@woodcock-design.com

MILLWORK CARPENTER
A.K. CUSTOM INTERIORS
1745 TILGHMAN STREET
PHILADELPHIA, PA 19122
T: 215.839.6659
KEVIN@AKCUSTOMCABINETS.COM

TASTE OF SPAIN

READING TERMINAL MARKET
1126 ARCH STREET, SPACE 457
PHILADELPHIA, PA 19107



JANICE WOODCOCK, AIA
RA-014293-B
Philadelphia BPL: 154698
AC # 2349523

DATE: 10/23/2019	
REVISION	DATE
PERMIT	10/02/2019

DRAWING TITLE:
PLUMBING PLANS & DETAILS

DRAWING NO:
A-3